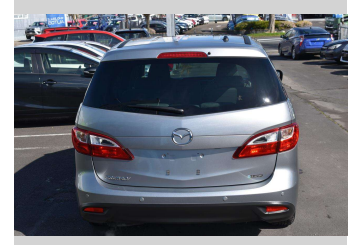


# 2010 Mazda Premacy 20E



Purchase Price

**\$8,980**

Includes GST  
Excludes on-road costs of \$350

Finance may be available on this vehicle. Ask one of our friendly staff for more information.

Gain peace of mind with Mechanical Breakdown Insurance. **Ask us how.**

## Top features

None Listed

Body Style

**Station Wagon**

Odometer

**91,042 km**

Engine

**1990 cc**

Fuel Type

**Petrol**

Transmission

**Auto**

Wheels

-

VIN

**7AT0C133X22106768**

Interior

-

Safety



Based on 2023 VSRR rating

Reg No.

**QBD719**

Ext Colour

**Silver**

History

-

Seats

-

CO2 Emissions

★ ★ ☆ ☆ ☆ ☆

Energy Economy

☆☆☆☆☆☆

**Annual fuel cost not available**

Energy Consumption unknown. Emissions and Energy Economy figures standardised to 3P WLTP.

**Stock ID: 22881**



Dealer Direct Wholesale Ltd | Phone 09 213 9688 | Email  
info@wholesaleautos.co.nz  
272 Great South Road, Takanini, Auckland 2112, New Zealand  
www.wholesaleautos.co.nz



4.68 | 404 reviews