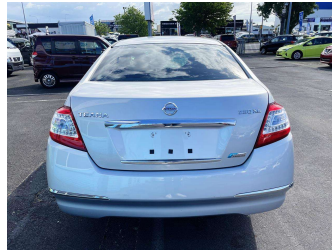


2012 Nissan Teana 250XE



Purchase Price **\$11,980**
Includes GST, Registration & Licensing

Finance may be available on this vehicle. Ask one of our friendly staff for more information.

Gain peace of mind with Mechanical Breakdown Insurance. **Ask us how.**

- Top features**
- » ABS Brakes
 - » Air Bag(s)
 - » Air Conditioning
 - » AM/FM RADIO
 - » Bluetooth
 - » Car Stereo
 - » Central Locking
 - » Electric Mirrors (Retr...
 - » Fog Lights
 - » Immobiliser
 - » Power Steering
 - » Power Windows
 - » Push Button Start
 - » Radio
 - » Remote Locking
 - » Traction Control
 - » Wheel Covers

Body Style
5 door, Sedan

Odometer
47,300 km

Engine
2495 cc

Fuel Type
Petrol

Transmission
Auto

Wheels
-

VIN
7AT0DH71X24250950

Interior
-

Safety



Based on 2023 VSRR rating

Reg No.

-

Ext Colour
Silver

History

-

Seats
5 seats

CO2 Emissions
★ ★ ★ ☆ ☆ ☆
229 grams/km

Energy Economy
★ ☆ ☆ ☆ ☆ ☆

Annual fuel cost of \$3,760
9.6L per 100km

Cost per year is an estimate based on petrol price of \$2.80 per litre and an average distance of 14000 km. Emissions and Energy Economy figures standardised to 3P WLTP.

Stock ID: 25976



Dealer Direct Wholesale Ltd | Phone 09 213 9688 | Email info@wholesaleautos.co.nz
272 Great South Road, Takanini, Auckland 2112, New Zealand
www.wholesaleautos.co.nz



★ ★ ★ ★ ★
4.68 | 404 reviews